

champion[®]

THE Healthcare Seating Company







Champion began with a vision of medical seating that is beautiful, comfortable, and optimized for healthcare. Since then, we've partnered with health organizations both large and small, developing a broad variety of solutions for patients and providers. Together, we're supporting the industry's transformation into an inclusive, human-centric experience.

With the addition of Winco, TransMotion, and Chair-A-Medics, we continue to set the medical standard delivering over 75 years of innovation in medical furnishings.



Table of Contents

Recliners 5

Stretcher Chairs..... 31

Phlebotomy Chairs..... 41

Treatment Tables 43

Task Seating..... 45

Privacy Screens 47

Champion Service + 50

Accessories 53

Fabrics & Finishes 59

Champion Collection

Premium Recliners

Champion began with a vision to provide healthcare seating solutions enhanced not only by their aesthetic appeal but also by what they offer in comfort and operability. The Champion Collection includes a complete range of premium power and manual recliners that are highly engineered to optimize form and function for both the patient and caregiver.



Alō Treatment



Alō Recovery



Ascent



Augustine



Verō



Inverness



Alō Treatment

The Alō Treatment recliner is our premium choice for treatment seating in oncology and infusion. Curated for the highest quality of care and aesthetic, the Alō Treatment combines form and function to create a stunning selection for any healthcare facility. Standard features allow maximum flexibility to design the look you need without sacrificing acute functionality. Powered recliner, USB port, and heat + massage provide modern conveniences and enhanced comfort for patients during treatment.



FEATURES



Powered or Manual Recline



Swing-Away Arms



4" Dual Thermoplastic Caster with Central-Locking



Standard & XL Sizes

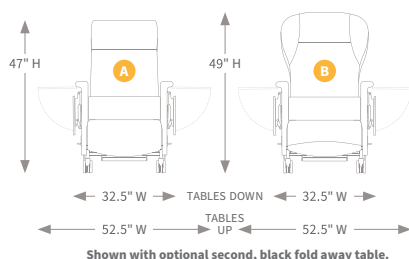


Heat + Massage

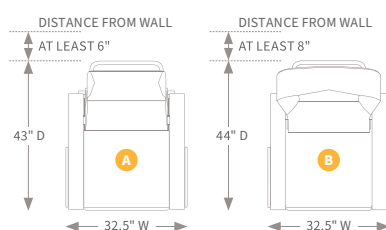
SPACE REQUIREMENTS

A: straight back model B: wing back model

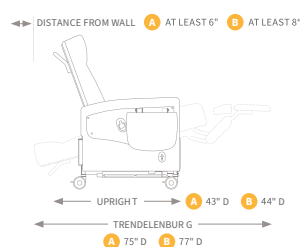
FRONT VIEW



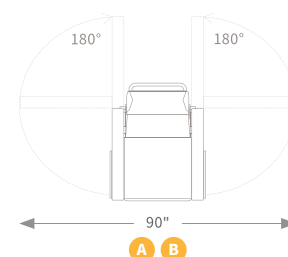
TOP VIEW



SIDE VIEW



TOP VIEW WITH SWING-AWAY ARMS



SPECIFICATIONS

	Straight Back	Wing Back	XL Straight Back	XL Wing Back
Powered recline	Yes Model: 61P	Yes Model: 63P	Yes Model: 62P	Yes Model: 64P
Manual recline	Yes Model: 610	No	Yes Model: 620	No
Weight capacity	300 lb.	300 lb.	500 lb.	500 lb.
Back height (from floor/from seat)	47" / 29"	49" / 31"	48" / 30"	49" / 31"
Overall width	32.5"	32.5"	36.5"	36.5"
Seat width	23"	23"	27"	27"
Seat height/depth	24.5" / 20.5"	24.5" / 20.5"	24.5" / 20.5"	24.5" / 20.5"
Arm height (from floor, highest point)	29"	29"	29"	29"
Overall upright depth (with handle)	43"	44"	43"	44"
Dual thermoplastic casters (diameter)	4"	4"	4"	4"

ACCESSORIES



Arm Caps



USB Charger



Side Tables



Foot Tray



Push Handle

Alō Recovery

The Alō Recovery is an exceptional premium recliner for use across a variety of acute applications and environments. It features a lower working height for patients and caregivers alike. With powered recline, USB port, and heat + massage modern conveniences it excels in helping provide comfort for patients during treatment.



FEATURES



Powered or Manual
Recline



Swing-Away Arms



4" Dual Thermoplastic
Caster with Central-
Locking



Standard & XL Sizes

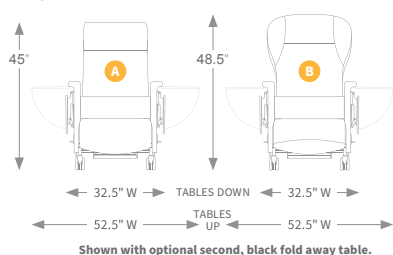


Heat + Massage

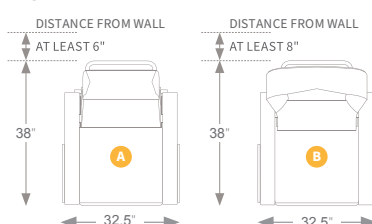
SPACE REQUIREMENTS

A: straight back model B: wing back model

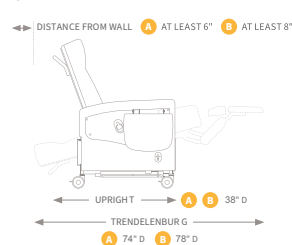
FRONT VIEW



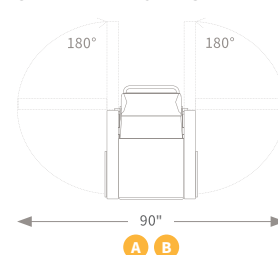
TOP VIEW



SIDE VIEW



TOP VIEW WITH SWING-AWAY ARMS



SPECIFICATIONS

	Straight Back	Wing Back	XL Straight Back	XL Wing Back
Powered recline	Yes Model: 61PL	Yes Model: 63PL	Yes Model: 62PL	Yes Model: 64PL
Manual recline	Yes Model: 610L	Yes Model: 630L	Yes Model: 620L	Yes Model: 640L
Weight capacity	300 lb.	300 lb.	500 lb.	500 lb.
Back height (from floor/from seat)	45" / 26.75"	48.5" / 31"	45.5" / 27.25"	49" / 31"
Overall width	32.5"	32.5"	36.5"	36.5"
Seat width	23"	23"	27"	27"
Seat height/depth	19.875" / 20.5"	19.875" / 20.5"	19.875" / 20.5"	19.875" / 20.5"
Arm height (from floor, highest point)	29"	29"	29"	29"
Overall upright depth (with handle)	38"	38"	38"	38"
Dual thermoplastic casters (diameter)	4"	4"	4"	4"

ACCESSORIES



Arm Caps



USB Charger



Side Tables



Foot Tray



Push Handle

Ascent

The Ascent is an upscale, stylish recliner, featuring increased padding for added softness and comfort during treatment, subtle curves, and swing-away arms for patient transport and infection control making it the ideal premium chair for both patient and caregivers. The Ascent has all the durable engineering and strength of The Classic recliner design with an upscale aesthetic.



FEATURES



Powered or Manual Recline



Swing-Away Arms



4" Dual Thermoplastic Caster with Central-Locking

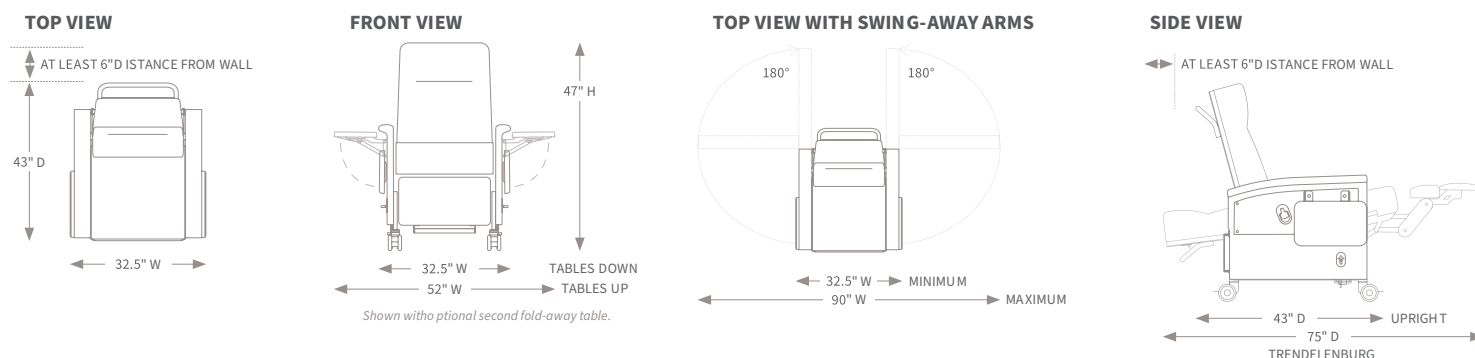


Standard & XL Sizes



Heat + Massage

SPACE REQUIREMENTS



SPECIFICATIONS

	Standard Model	XL Model
Power recline	Yes Model: 65P	Yes Model: 66P
Manual recline	Yes Model: 650	Yes Model: 660
Weight capacity	300 lb.	500 lb.
Back height (from floor/from seat)	47"/29"	49"/31"
Overall width (2 gray tables down/up)	32.5"/52"	36.5"/56"
Maximum width (arms open at widest)	90"	94"
Minimum width (arms open at 180°)	32.5"	36.5"
Seat width	23"	27"
Seat height/depth	22.45"/20.5"	24.5"/20.5"
Arm height (from floor)	29"	29"
Overall upright depth / Trendelenburg depth	43"/75"	44"/77"
Dual thermoplastic casters (diameter)	4"	4"

ACCESSORIES



USB Charger



Side Tables



Foot Tray



Push Handle



Tablet Holder

Augustine

The Augustine was designed with a patient-centric approach - to be comfortable and help put the patient at ease. This premium treatment recliner has the clinical features needed for high-use medical environments while also engineered to mimic home furnishings with concealed casters and a spacious seat that provides personal space and luxurious comfort.



FEATURES



Manual Recline



Fixed Arms



3" Dual Casters with
Rear-Central Lock and
Central Front Brake



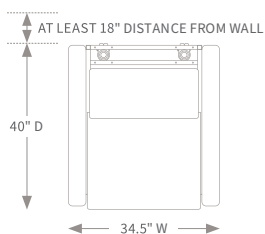
500 lb.. Weight Capacity



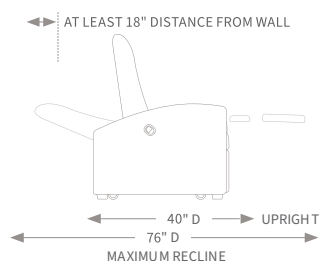
Heat + Massage

SPACE REQUIREMENTS

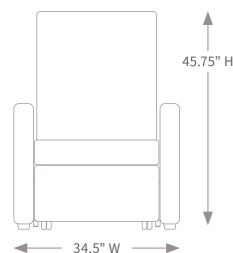
TOP VIEW



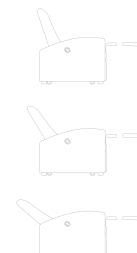
SIDE VIEW



FRONT VIEW



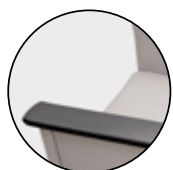
INFINITE RECLINE POSITIONS



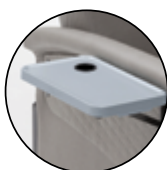
SPECIFICATIONS

Model Number	5001
Manual recline	Yes
Weight capacity	500 lb.
Back height (from floor/from seat)	45.75"/28.5"
Overall width (no tables)	34.5"
Overall width (2 optional tables down/up)	38.5"/56.5"
Seat width	26"
Seat height/depth	19.75"/20.75"
Arm height (from floor, highest point)	26.75"
Overall upright depth (with handle)	40"
Maximum recline depth	76"
Dual thermoplastic casters (diameter)	3"

ACCESSORIES



Arm Caps



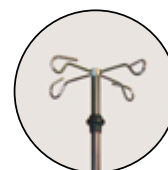
Side Tables



Headrest Cover &
Pillow Set



Head Pillow & Lumbar
Support



IV Pole

For additional accessory options, please see the Accessories section on Page 53.

Verō

Continuously evolving patient care requirements create opportunities for enhanced solutions. The Verō provides total flexibility in matching your application with the features you require and the comfort your patients demand. Powered recline and an infinite position backrest offer patient independence, while bilateral and foot-operated controls provide clinician comfort and convenience.



FEATURES



Powered or Manual Recline



Swing-Away or Fixed Arms



Dual Casters or Pedestal Feet



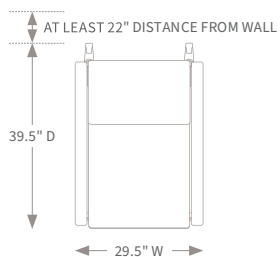
Standard & XL Sizes



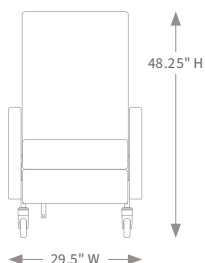
Heat + Massage

SPACE REQUIREMENTS

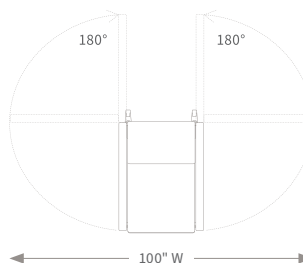
TOP VIEW



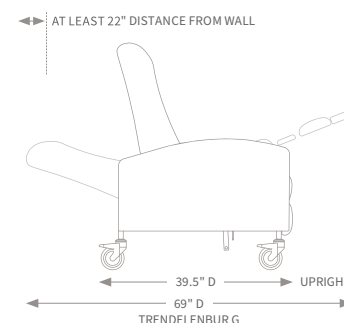
FRONT VIEW



TOP VIEW WITH SWING-AWAY ARMS



SIDE VIEW

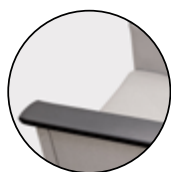


SPECIFICATIONS

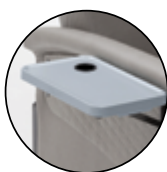
	5" Casters	3" Casters	XL 5" Casters	XL 3" Casters
Manual recline	Yes (6X4/6Y4)	Yes (6X4/6Y4)	Yes (6X5/6Y5)	Yes (6X5/6Y5)
Power recline	Yes (6P4)	Yes (6P4)	Yes (6P5)	Yes (6P5)
Weight capacity	350 lb.	350 lb.	500 lb.	500 lb.
Back height (from floor/from seat)	48.25"/29"	45.25"/29"	48.25"/29"	45.25"/29"
Overall width*	29.5"	29.5"	34"	34"
Seat width	22.5"	22.5"	26.5"	26.5"
Seat height	22.75"	19.75"	22.75"	19.75"
Arm height (from floor, highest point)	29"	26"	29"	26"
Seat depth	22"	22"	22"	22"
Overall upright depth	39.5"	39.5"	39.5"	39.5"
Trendelenburg depth	69"	69"	69"	69"

*Measured without tables and with arms closed.

ACCESSORIES



Arm Caps



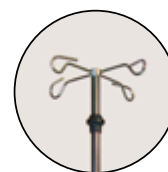
Side Tables



Headrest Cover & Pillow Set



Head Pillow & Lumbar Support



IV Pole

For additional accessory options, please see the Accessories section on Page 53.

Inverness

The Inverness treatment recliner is superbly crafted with a suite of intuitive, practical, and durable innovations to address patient and clinician comfort. With 24-hour functionality, the Inverness is ideal for treatments promoting patient independence and limited, caregiver engagement. Using thousands of documented hours of feedback and refinements helped create an ideal blend of daytime luxury with nocturnal comfort to help patients sleep through the night. The Inverness is an exceptional chair that provides comfort, utility, and flexibility for multiple treatment applications.



FEATURES



Manual Recline



Swing-Away Arms



Fixed Front Casters
with Accessible Lock
tabs



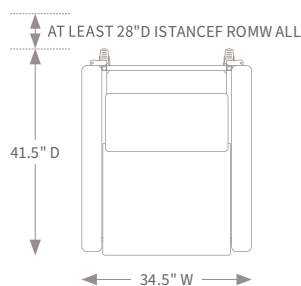
500 lb. Weight Capacity



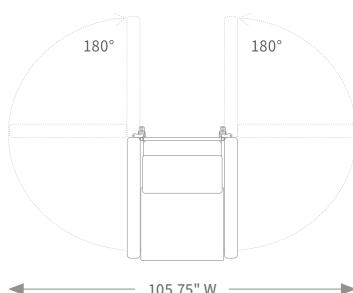
Heat + Massage

SPACE REQUIREMENTS

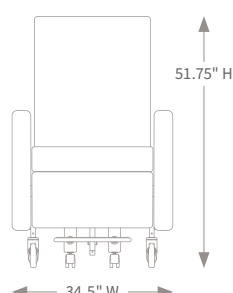
TOP VIEW



TOP VIEW WITH SWING-AWAY ARMS

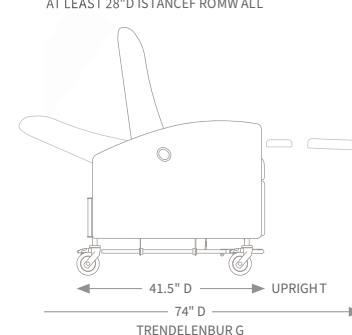


FRONT VIEW



SIDE VIEW

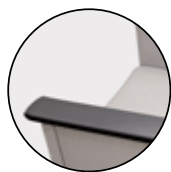
AT LEAST 28" D DISTANCE FROM WALL



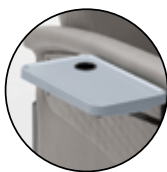
SPECIFICATIONS

Model Number	6240
Manual recline	Yes
Weight capacity	500 lb.
Back height (from floor/from seat)	51.75"/28.5"
Overall width (no tables)	34.5"
Overall width (2 optional tables down/up)	38.5"/56.5"
Seat width	26"
Seat height/depth	25.5"/20.75"
Arm height (from floor)	32.5"
Overall upright depth	41.5"
Trendelenburg	74"
Casters (diameter)	5"

ACCESSORIES



Arm Caps



Side Tables



Foot Tray



Push Handle



Headrest Cover &
Pillow Set

For additional accessory options, please see the Accessories section on Page 53.

Winco Collection

Value Recliners

Composed of economical, feature-rich medical solutions designed to meet your most demanding applications, while universally aligning with environments across the spectrum of clinical care.



The Classic



Legacy Series

Care Cliner



Drop Arm
Care Cliner



The Harmony



The 526 Sleeper



The Classic

The Classic is an economical recliner with a rock-solid steel frame and heavy-duty casters, making it ideal for a variety of applications and environments. It focuses on patient comfort, ease of use, long-life, and dependability and is engineered to meet your most demanding applications, including nocturnal use.



FEATURES



Powered or Manual Recline



Swing-Away Arms



Fixed Front Casters with Accessible Lock Tabs



Standard & XL Sizes



Heat + Massage

SPECIFICATIONS

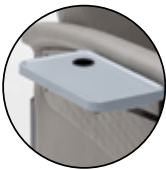
	Standard	XL
Powered recline	Yes Model: 85P	Yes Model: 86P
Manual recline	Yes Model: 858	Yes Model: 868
Weight capacity	300 lb..	500 lb..
Back height (from floor/seat)	48.5 " /28.5 "	49.5 " /29.5 "
Overall width (two gray tables down/up)*	32.75 " /51.25 "	36.5 " /55.5 "
Maximum width (arms open at widest)	90"	94"
Minimum width (arms open at 180°)	32.75"	36.5"
Seat width	22.75 "	26.75 "
Seat height/depth	25.5 " /19.5 "	25.5 " /20.5 "
Arm height (from floor)	29.75"	29.75 "
Overall upright depth/Trendelenburg depth	42.5 " /75"	42.5 " /76"
Thermoplastic casters (diameter)	5 "	5 "

*Measured without tables and with arms closed.

ACCESSORIES



USB Charger



Side Tables



Foot Tray



Push Handle



Headrest Cover & Pillow Set

For additional accessory options, please see the Accessories section on Page 53.

The Care Cliner

With an all-inclusive design, the Care Cliner is an ideal workhorse for treatment within extended care, long-term care, and clinical settings. It comes with superior features you might find on premium healthcare seating.



FEATURES



Manual Recline



Fixed Padded Armrests



5" Nylon or Steel Casters



Standard & XL Sizes



Heat + Massage

SPECIFICATIONS

	Standard	XL
Model Number	6530	6540
Seat Height	21" (53.3 cm)	21" (53.3 cm)
Seat Width	21" (53.3 cm)	25" (63.5 cm)
Seat Depth	20" (51 cm)	20" (51 cm)
Overall Height	49" (124.5 cm)	49" (124.5 cm)
Overall Width*	32.25" (81.9 cm)	36.25" (90.1 cm)
Back Height above Seat	31.5" (80 cm)	31.5" (80 cm)
Overall Length (Upright)	39" (99 cm)	44" (111.8 cm)
Overall Length (Reclined)	76.5" (194.3 cm)	76.5" (194.3 cm)
Armrest Height	27" (68.6 cm)	27" (68.6 cm)
Weight	94 lb. (42.6 kg)	111 lb. (50.4 kg)
Weight Capacity	275 lb. (124.7 kg)	450 lb. (204 kg)

*Measured without tables and with arms closed.

ACCESSORIES



Side Tables



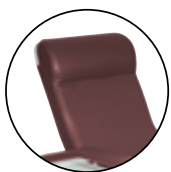
Push Handle



Leg Extensions



Headrest Protector



Head Pillow & Lumbar Support

For additional accessory options, please see the Accessories section on Page 53.

The Drop Arm Care Cliner

The Drop Arm Care Cliner is designed with arms that can be lowered flush with the seat to aid in patient transfer. Ideal for use within extended care, long-term care, and clinics.



FEATURES



Manual Recline



Fixed Padded Drop-Down Armrests



5" Nylon or Steel Casters



Standard & XL Sizes



Heat + Massage

SPECIFICATIONS

	Standard	XL
Model Number	6550	6570
Seat Height	21" (53.3 cm)	21" (53.3 cm)
Seat Width	21" (53.3 cm)	25" (63.5 cm)
Seat Depth	20" (51 cm)	20" (51 cm)
Overall Height	49" (124.5 cm)	49" (124.5 cm)
Overall Width*	33.75" (85.73 cm)	37.75" (95.9 cm)
Back Height above Seat	31.5" (80 cm)	31.5" (80 cm)
Overall Length (Upright)	40" (101.6 cm)	43" (109.2 cm)
Overall Length (Reclined)	76.5" (194.3 cm)	76.5" (194.3 cm)
Armrest Height	27" (68.6 cm)	27" (68.6 cm)
Weight	105 lb. (47 kg)	111 lb. (50.4 kg)
Weight Capacity	275 lb. (124.7 kg)	450 lb. (204 kg)

*Measured without tables and with arms closed.

ACCESSORIES



Side Tables



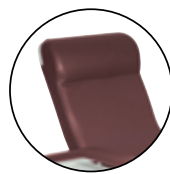
Push Handle



Leg Extensions



Headrest Protector



Head Pillow & Lumbar Support

For additional accessory options, please see the Accessories section on Page 53.

The Harmony

With a more home-like aesthetic, the Harmony comes with a traditional push-back recline, left-side table, and pedestal feet with casters also available as a customizable option. The Harmony was designed to bring medical-grade seating into a home environment that can complement any décor. It is a value-based, quality solution for patients who can receive treatment in the luxury of their own home.



FEATURES



Push Back Recline



Fixed Arms



350 lb. Weight Capacity

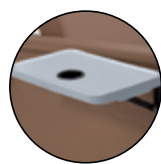


Pedestal Feet or
3” Casters

SPECIFICATIONS

Model Number	6H04
Weight capacity	350 lb.
Back height (from floor/seat)	P=47", C=47.5"/32"
Overall width (table down/up)	32.5"/43"
Seat width 24"	24"
Seat height/depth	P=18.5", C=19"/19.5"
Arm height (from floor)	P=27.25", C=27.75"
Overall upright depth	41.25"
Trendelenburg depth	72"

ACCESSORIES



Side Tables

For additional accessory options, please see the Accessories section on Page 53.

The 526 Sleeper

The open concept design of the 526 Sleeper provides stylish daytime seating and spacious sleeping for overnight guests. One of Champion's first products, the 526 Sleeper features time-tested engineering with superior durability for years of use. Keep loved ones close and comfortable with the 526 Sleeper.



The 526 Sleeper

champion.



FEATURES



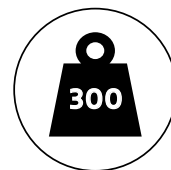
Three Positions



Caster Wheels
(Rear-Locking)



Z-Spring
Construction



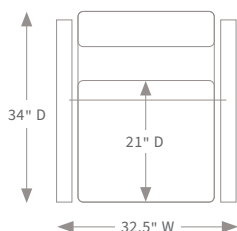
300 lb. Weight Capacity



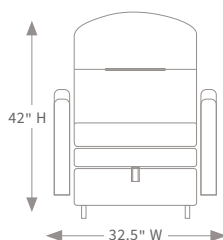
Open Concept
Design

SPACE REQUIREMENTS

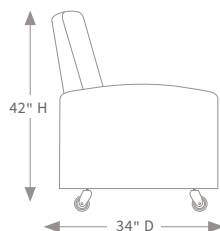
TOP VIEW



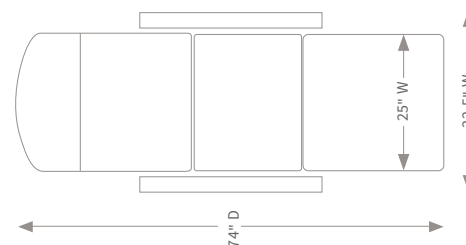
FRONT VIEW



SIDE VIEW



TOP VIEW (EXTENDED)



SPECIFICATIONS

Model Number	526
Weight capacity	300 lb.
Overall height	42"
Overall width	32.5"
Sleep length	74"
Seat height/width	18"/25"
Seat depth	21"
Arm width	2.5"
Optional wood armrest width	3"
Total number of positions	3

For additional accessory options, please see the Accessories section on Page 53.

TransMotion Collection

Stretcher Chairs

Industry-disrupting seating that facilitates patient flow from admission through discharge on a single surface. Minimizes risk, maximizes space, and optimizes productivity.



TMM5 PLUS



TMM4 PLUS



TMM3



Admission



Transport



Procedure



Discharge

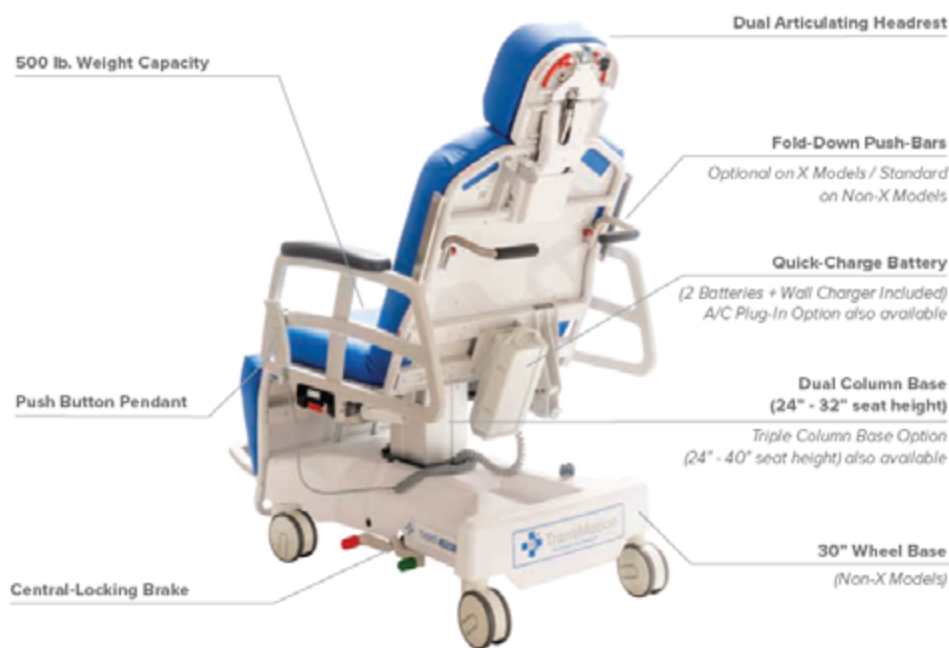
TMM5 PLUS

The TransMotion TMM5 PLUS enables facilities to streamline the treatment process and surgical flow by replacing multiple pieces of equipment with a single device. The TMM5's dual articulating headpiece makes it an optimal choice for most neck up surgical procedures. The TransMotion TMM5 PLUS is commonly used in Ophthalmic Surgery (Eyes) and Plastic Surgery.



Common areas of use:
Ophthalmic Surgery (Eyes)
Plastic Surgery

FEATURES & ANATOMY



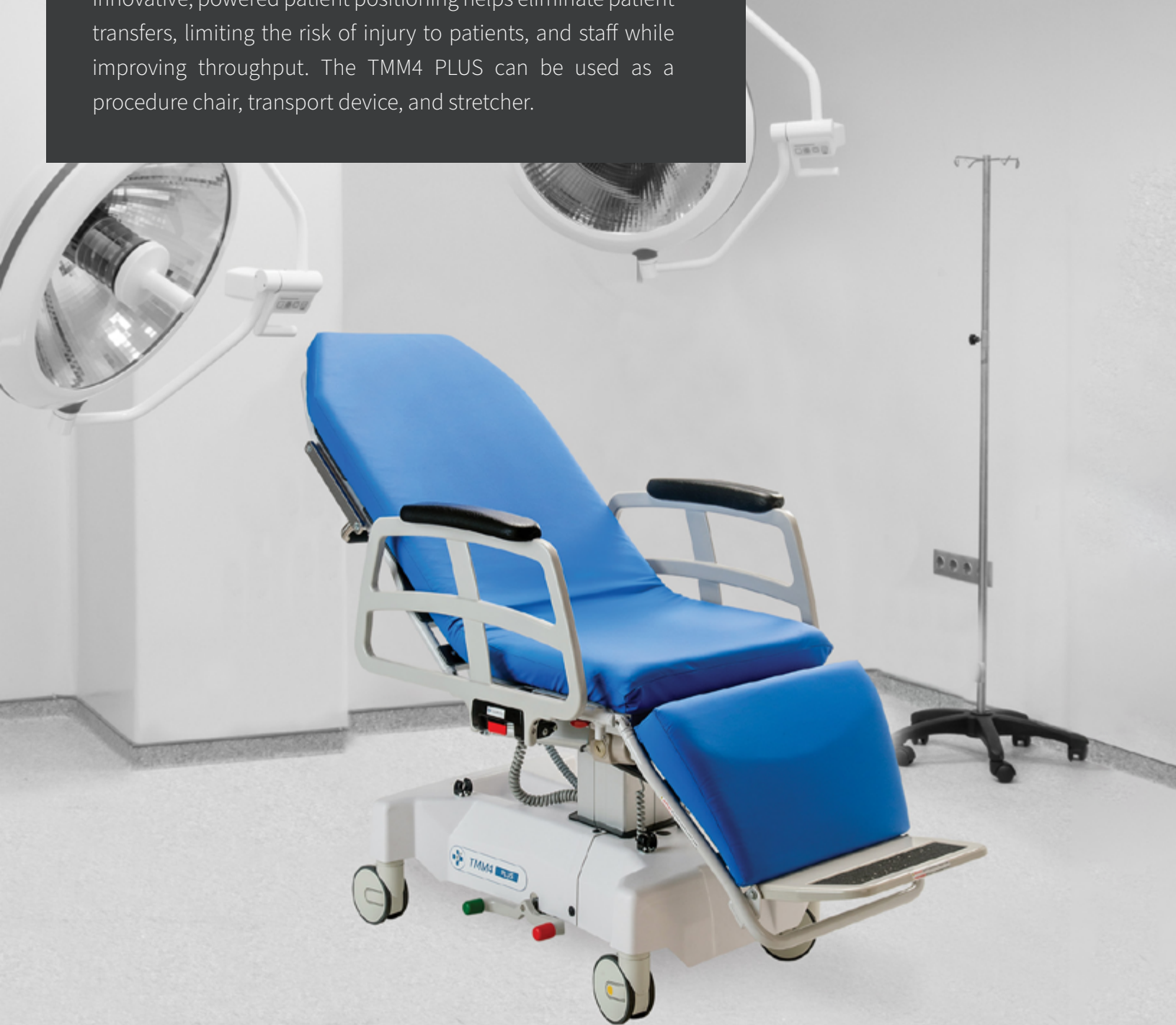
SPECIFICATIONS

	TMM5 PLUS-B	TMM5 PLUS-LB	TMM5 PLUS-WB	TMM5 PLUS-WTB
Maximum Patient Weight	500 lb. (227 kg)	500 lb. (227 kg)	500 lb. (227 kg)	500 lb. (227 kg)
Seat Height, Low	24.3" (61.7 cm)	22.8" (57.9 cm)	24.3" (61.7 cm)	23.8" (60.5 cm)
Seat Height, High	32" (81.3 cm)	30.5" (77.5 cm)	32" (81.3 cm)	39.6" (100.6 cm)
Back Height	33.75" (85.73 cm)	33.75" (85.73 cm)	33.75" (85.73 cm)	33.75" (85.73 cm)
Side Rail Height, Up (seat pan to rail top)	13.5" (34.3 cm)	13.5" (34.3 cm)	13.5" (34.3 cm)	13.5" (34.3 cm)
Overall Chair Height, Low	56" (142.24 cm)	53" (134.62 cm)	56" (142.24 cm)	56" (142.24 cm)
Overall Chair Height, High	64" (163 cm)	70" (177.8 cm)	64" (163 cm)	71" (181 cm)
Seat Width	24" (61 cm)	24" (61 cm)	28" (71 cm)	28" (71 cm)
Overall Width (rails up)	30" (76 cm)	30" (76 cm)	34" (86 cm)	34" (86 cm)
Overall Width (rails down)	24" (61 cm)	24" (61 cm)	28" (71 cm)	28" (71 cm)
Patient Surface Length (excludes "F" option)	79" (201 cm)	79" (201 cm)	79" (201 cm)	79" (201 cm)
Side Rail Length	27.6" (70.1 cm)	27.6" (70.1 cm)	27.6" (70.1 cm)	27.6" (70.1 cm)
Backrest Articulation Range	0° - 75°	0° - 75°	0° - 75°	0° - 75°
Headpiece Articulation Range (fully elevated - fully retracted)	30° - 60°	30° - 60°	30° - 60°	30° - 60°
Headpiece Adjustment Range (Lowered - Raised)	.9" - 3.5" (2 cm - 9 cm)	.9" - 3.5" (2 cm - 9 cm)	.9" - 3.5" (2 cm - 9 cm)	.9" - 3.5" (2 cm - 9 cm)
Wheelbase (length X width)	30" x 20" (76 cm x 51 cm)	30" x 20" (76 cm x 51 cm)	30" x 20" (76 cm x 51 cm)	30" x 20" (76 cm x 51 cm)

The TransMotion Collection has a wide variety of accessories to choose from. To browse these accessories, visit our Accessories section on Page 55.

TMM4 PLUS

The versatility of the TMM4 PLUS Multi-Purpose Stretcher-Chair allows for utilization in a variety of facilities and departments. Innovative, powered patient positioning helps eliminate patient transfers, limiting the risk of injury to patients, and staff while improving throughput. The TMM4 PLUS can be used as a procedure chair, transport device, and stretcher.



Common areas of use:

Surgical (Pre / Post-Op)
Endoscopy
Emergency Department
GI

FEATURES & ANATOMY



SPECIFICATIONS

	TMM4 PLUS-B	TMM4 PLUS-LB	TMM4 PLUS-TB	TMM4 PLUS-WB	TMM4 PLUS-TLB	TMM4 PLUS-WTB
Maximum Patient Weight	500 lb. (227 kg)	500 lb. (227 kg)	500 lb. (227 kg)	500 lb. (227 kg)	500 lb. (227 kg)	500 lb. (227 kg)
Seat Height, Low	24.3" (61.7 cm)	22.8" (57.9 cm)	24.4" (62 cm)	24.3" (61.7 cm)	22.9" (58.2 cm)	24.4" (62 cm)
Seat Height, High	32.1" (81.5 cm)	30.6" (77.7 cm)	40.1" (101.9 cm)	32.1" (81.5 cm)	38.6" (98 cm)	40.1" (101.9 cm)
Back Height	33.75" (85.73 cm)	33.75" (85.73 cm)	33.75" (85.73 cm)	33.75" (85.73 cm)	33.75" (85.73 cm)	33.75" (85.73 cm)
Side Rail Height, Up (seat pan to rail top)	13.5" (34.3 cm)	13.5" (34.3 cm)	13.5" (34.3 cm)	13.5" (34.3 cm)	13.5" (34.3 cm)	13.5" (34.3 cm)
Overall Chair Height, Low	54" (137 cm)	52" (133 cm)	53" (135 cm)	54" (137 cm)	52" (133 cm)	53" (135 cm)
Overall Chair Height, High	62" (157 cm)	62" (157 cm)	70" (178 cm)	62" (157 cm)	68" (174 cm)	70" (178 cm)
Seat Width	24" (61 cm)	24" (61 cm)	24" (61 cm)	28" (71 cm)	24" (61 cm)	28" (71 cm)
Overall Width (rails up)	30" (76 cm)	34" (86.4 cm)	30" (76 cm)	34" (86 cm)	30" (76 cm)	34" (86.4 cm)
Overall Width (rails down)	24" (61 cm)	28" (71 cm)	24" (61 cm)	28" (71 cm)	24" (61 cm)	28" (71 cm)
Patient Surface Length (without "F" option)	77" (195 cm)	77" (195 cm)	77" (195 cm)	77" (195 cm)	77" (195 cm)	77" (195 cm)
Side Rail Length	27.6" (70.1 cm)	27.6" (70.1 cm)	27.6" (70.1 cm)	27.6" (70.1 cm)	27.6" (70.1 cm)	27.6" (70.1 cm)
Backrest Articulation Range	0° - 75°	0° - 75°	0° - 75°	0° - 75°	0° - 75°	0° - 75°
Trendelenburg	5°	5°	5°	5°	5°	5°
Radiolucent Window (width x height)	20" X 25.5" (51 cm X 65 cm)	20" X 25.5" (51 cm X 65 cm)	20" X 25.5" (51 cm X 65 cm)	20" X 25.5" (51 cm X 65 cm)	20" X 25.5" (51 cm X 65 cm)	20" X 25.5" (51 cm X 65 cm)
Wheelbase (length X width)	30" x 20" (76 cm x 51 cm)	30" x 20" (76 cm x 51 cm)	30" x 20" (76 cm x 51 cm)	30" x 20" (76 cm x 51 cm)	30" x 20" (76 cm x 51 cm)	30" x 20" (76 cm x 51 cm)

The TransMotion Collection has a wide variety of accessories to choose from. To browse these accessories, visit our Accessories section on Page 55.

TMM3

The TMM3 Video Fluoroscopy Swallow Study (VFSS) Stretcher-Chair features powered patient positioning designed specifically to perform Barium Swallow Studies. Its 90° rotating seat eliminates transfers by allowing patients to remain in-chair for both Lateral and A/P imaging. Powered back, leg, and height adjustments eliminate hydraulic, pneumatic or manual positioning and allow for effortless conversion from chair to stretcher. The TMM3 is a procedure chair, transport device, and stretcher all in one!



Common areas of use:

Radiology

Speech Pathology

FEATURES & ANATOMY



SPECIFICATIONS

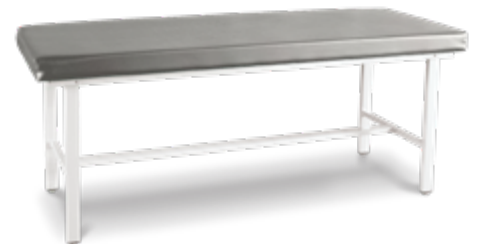
Maximum Patient Weight	350 lb. (159 kg.)
Seat Height, Low	25.1 in. (64 cm.)
Seat Height, High	33 in. (83.82 cm.)
Seat Cushion Height, Front (tapered)	3.25 in. (8.26 cm.)
Seat Cushion Height, Back (tapered)	2.25 in. (5.08 cm.)
Back Cushion Height	33 in. (83.82 cm.)
Seat Width	24 in. (61 cm.)
Back Width (no extension)	15 in. (38 cm.)
Back Width (w/ optional extension)	24 in. (61 cm.)
Radiolucent Window (width x height)	13 in. x 26 in. (33 cm. x 65 cm.)
Overall Width (rails up)	30.5 in. (77.47 cm.)
Patient Surface Length (standard)	77 in. (195.58 cm.)
Patient Surface Length (w/ manual folding footrest)	70.4 in. (179 cm.)
Overall Chair Height, Low	55.5 in. (141 cm.)

The TransMotion Collection has a wide variety of accessories to choose from. To browse these accessories, visit our Accessories section on Page 55.

Clinical Essentials

Phlebotomy chairs, task seating, treatment tables, and privacy screens designed to enhance the patient and care giver experience.





Phlebotomy Chairs

We provide a wide variety of options to meet your patient treatment needs. We manufacture an assortment of blood-drawing models that provide functionality, comfort, and security for patients and clinicians.



The Spirit

This basic model features two infinitely adjustable armrests, durable plastic resin seat, and non-marring leveling feet. A clean and simple design that stands up to years of use.



SPECIFICATIONS

	With Storage Drawer	No Storage Drawer
Model Number	2570	2571
Overall Width	35.25" (89.5 cm)	29" (73.7 cm)
Seat Width	18" (45.7 cm)	18" (45.7 cm)
Arm Height Range	26.5" (67.3 cm) – 32.5" (82.6 cm)	26.5" (67.3 cm) – 32.5" (82.6 cm)
Seat Height	20.5" (52 cm)	20.5" (52 cm)
Seat Depth	15" (38 cm)	15" (38 cm)
Seat Back Height	16" (40.6 cm)	16" (40.6 cm)
Overall Height	36" (91.4 cm)	36" (91.4 cm)
Overall Length	20.5" (52 cm)	20.5" (52 cm)
Weight Capacity	300 lbs. (136 kg)	300 lbs. (136 kg)

The Solace

The Solace features two infinitely adjustable armrests, an upholstered seat and back, and non-marring leveling feet. The flip-up contoured urethane armrest provides comfort, easy access, and added security for the patient. Available with or without a storage cabinet.



SPECIFICATIONS

	With Storage Drawer	No Storage Drawer
Model Number	2572	2573
Overall Width	35.25" (89.5 cm)	29" (73.7 cm)
Seat Width	18" (45.7 cm)	18" (45.7 cm)
Arm Height Range	27.75" (70.5 cm) – 33.75" (85.7 cm)	27.75" (70.5 cm) – 33.75" (85.7 cm)
Seat Height	22.5" (57.2 cm)	22.5" (57.2 cm)
Seat Depth	18.5" (47 cm)	18.5" (47 cm)
Seat Back Height	24.5" (62.2 cm)	24.5" (62.2 cm)
Overall Height	44.5" (113 cm)	44.5" (113 cm)
Overall Length	27" (68.6 cm)	27" (68.6 cm)
Weight Capacity	300 lbs. (136 kg)	300 lbs. (136 kg)

The Unity

The Unity features two infinitely adjustable armrests, an upholstered seat and back, and a 450 lb. weight capacity. The flip-up contoured urethane armrest provides comfort, easy access, and added safety for the patient. Available with or without a storage cabinet.



SPECIFICATIONS

	With Storage Drawer	No Storage Drawer
Model Number	2574	2575
Overall Width	40.25" (102.2 cm)	34" (86.4 cm)
Seat Width	24.25" (61.6 cm)	24.25" (61.6 cm)
Arm Height Range	27.75" (70.5 cm) – 33.75" (85.7 cm)	27.75" (70.5 cm) – 33.75" (85.7 cm)
Seat Height	22.5" (57.2 cm)	22.5" (57.2 cm)
Seat Depth	18.5" (47 cm)	18.5" (47 cm)
Seat Back Height	16" (40.6 cm)	16" (40.6 cm)
Overall Height	36.5" (92.7 cm)	36.5" (92.7 cm)
Overall Length	25" (63.5 cm)	25" (63.5 cm)
Weight Capacity	450 lbs. (204 kg)	450 lbs. (204 kg)

Treatment Tables

Champion supports a range of treatment tables to meet the needs of multiple applications and environments - from physician offices to clinics, schools, and hospitals.



FEATURES



WEIGHT CAPACITY:
400 lb. (181.4 kg)



PATIENT SURFACE (LxW):
72" (183 cm) X 28" (71 cm)



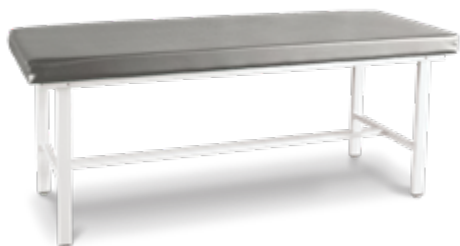
DURABILITY:
Powder-coated,
steel frames



STABILITY:
Adjustable
leveling feet



FUNCTIONALITY:
All models include a paper
holder and are available with
or without a shelf (SH)



The 8500

Flat top

The 8500 flat-top treatment table features a durable dove-gray powder-coated steel frame, paper holder with cutter, adjustable leveling feet, and comfortable patient surface. Standard height is 30". Specialty heights (19", 25", or 36") are also available.



The 8550

Recovery Couch

The 8550 is engineered to provide years of service. It is commonly used in extended care, long-term care, and clinics. The comfortable contoured headrest combined with upholstered 2.5" medium-density foam provides exceptional comfort. Includes paper holder and cutter.



The 8570

Adjustable Back

The 8570 adjustable treatment table includes features such as a powder-coated steel frame, paper holder, adjustable leveling feet, and comfortable 2" medium-density foam. The headrest is gas spring operated and uses a 'one touch' adjustment control. Standard height is 30". Specialty heights (25" or 36") are also available.

Task Seating

Champion has a full range of durable, functional, and stylish task seating to meet any clinical setting and budget.



Task Stools

This multi-purpose, gas-lift task stool features a polished aluminum base in the 440 model and a high-density plastic base on the 430.

The 430



Seat Height	19" (48 cm.)
Max Seat Height	21.5" (54.61 cm.)
Overall Height	19" (48 cm.)
Seat Diameter	16.5" (41.91 cm.)
Weight Capacity	250 lb.. (113.40 kg.)
Footprint	22" (55.88 cm.)
Base Type	High-Impact Plastic

The 440



Seat Height	17.75" (45.09 cm.)
Max Seat Height	23" (58.42 cm.)
Overall Height	17.75" (45.09 cm.)
Seat Diameter	16.5" (41.91 cm.)
Weight Capacity	250 lb.. (113.40 kg.)
Footprint	22" (55.88 cm.)
Base Type	Polished Aluminum

The 507



Overall Height	34" - 43"
Overall Width (Wheel Base)	22"
Seat Width	15"
Seat Height (Adjustable)	16.5" (41.91 cm.)
Weight Capacity	300 lb.
Base Type	Composite Base

Task Chairs

Versatile caregiver seating featuring "one-touch" seat height adjustment and height-adjustable seat backs. The 435 model include a high-density plastic base. The 445 model includes a polished aluminum base.

The 435



Seat Height	17" (43.18 cm.)
Max Seat Height	22.75" (57.79 cm.)
Seat Back Height	13" (33.02 cm.)
Overall Height	29" - 34" (73.7 cm. - 86.4 cm.)
Seat Diameter	16.5" (41.91 cm.)
Weight Capacity	250 lb.. (113.40 kg.)
Footprint	22" (55.88 cm.)
Base Type	High Impact Plastic

The 445



Seat Height	18.25" (46.36 cm.)
Max Seat Height	23.25" (59.06 cm.)
Seat Back Height	13" (33.02 cm.)
Overall Height	30" - 35" (76.2 cm. - 88.9 cm.)
Seat Diameter	16.5" (41.91 cm.)
Weight Capacity	250 lb.. (113.40 kg.)
Footprint	22" (55.88 cm.)
Base Type	Polished Aluminum

The 505



Overall Height	37" - 46.5"
Overall Width (Wheel Base)	26.5"
Seat Width	19"
Seat Height (Adjustable)	21" - 28"
Weight Capacity	300 lb.

The 506



Overall Height	37" - 46.5"
Overall Width (Wheel Base)	26.5"
Seat Width	19"
Seat Height (Adjustable)	21" - 28"
Arm Height (From Seat)	6.5"
Weight Capacity	300 lb.

Privacy Screens

Patient privacy screens provide a broad range of flexible solutions to meet a wide spectrum of requirements for healthcare professionals, military procurement, disaster relief coordinators, and educational institutions.





THE PRIVESS™ BASIC

3-PANEL PRIVACY SCREEN

The Privess™ Basic provides portable privacy. Each screen includes casters for mobility and crutch tips for stationary use.

SPECIFICATIONS

Model Number	3130 / 3139
Overall Width (fully extended)	79" (200.7 cm)
Individual Panel Width	27" (68.6 cm)
Overall Height (with casters)	70" (177.8 cm)
Base Width	27" (68.9 cm)
Base Depth	20" (50.8 cm)
Individual Panel Length	49" (124.5 cm)



THE PRIVESS™ ELITE

3-PANEL DESIGNER PRIVACY SCREEN

The Privess™ Elite is the common choice for style-minded users who need a larger patient privacy solution matching their decor. Each screen includes casters for mobility and crutch tips for stationary use.

SPECIFICATIONS

Model Number	3170
Overall Width (fully extended)	84" (213.4 cm)
Individual Panel Width	28" (71.1 cm)
Overall Height (with casters)	70" (177.8 cm)
Base Width	31" (78.7 cm)
Base Depth	23" (58.4 cm)
Individual Panel Length	55" (139.7 cm)





Champion Service+ is the nation's largest provider of medical seating maintenance and service. For over 20 years, we have been supporting the healthcare market. We pride ourselves in ensuring your equipment is operable, safe, and fully optimized to support patient care. Through our experienced staff, we offer a variety of programs to maximize your return on investment in healthcare seating.

ProServ

A proactive, comprehensive service program which preserves and protects the long-term condition of your medical seating product(s). Thus, allowing your staff to focus on patient care. It incorporates quarterly, preventative maintenance visits that include:

Deep cleaning (pressure wash or manual cleaning)

A thorough cleaning and disinfecting of your medical seating/products (from top to bottom)

- Covers hard-to-reach spots, loosens tough dirt, neutralizes odor, and can help kill harmful bacteria
- Includes use of a non-corrosive cleaner (with controlled pressure) to prevent any damages

Multi-point inspection on each chair (or product)

- Mechanical and electrical components – complete review and optimization, with repairs (as needed)
- Upholstered parts – complete review and optimization, with repairs (as needed)

Discount on repair and/or replacement parts purchased during the Agreement (PM visits or otherwise)

Complete, written fleet assessment by serial # (including an infection control survey)

Comprehensive in-servicing for clinical staff

No bill for labor and travel (only on PM visits)

Per Call

A case-by-case, reactive approach to servicing your medical seating products. It includes:

- Mechanical and electrical repairs, upholstery replacement, diagnostics and troubleshooting
- Replacement and installation of standard parts

Vinyl Restoration

If your vinyl is beginning to show signs of wear-and-tear, could use a little TLC, or if you are looking for a completely new color or pattern, you can choose to renew the vinyl on your Champion medical seating / product.

- Transition your medical seating to a new color scheme
- Color match existing products
- Re-enforce infection control, mechanical and electrical repairs, upholstery replacement, chair diagnostics and troubleshooting
- Replacement and installation of standard parts

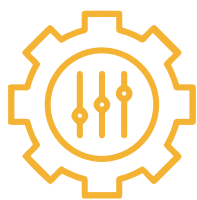
Request Service

Contact us at Service@championchair.com



Resources





Options & Accessories



Use Instructions



Fabrics



Product Application Maps



Index

accessories

Recliners

Tablet and TV mounts that provide entertainment. IV and oxygen tank mounts that add functionality. Sleep guards for nocturnal therapies. Our extensive line of options and accessories lets you redefine both patient and practitioner experience and comfort.

PATIENT COMFORT & ENTERTAINMENT



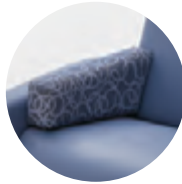
HEAT & MASSAGE

Easily accessible buttons providing three warmth and four massage levels. Heater comes with auto shut-off.



HEAD PILLOW/ LUMBAR SUPPORT

Adjustable head pillow with large strap which can be moved down for additional lumbar support. Logo embossing option available.



CUSHION WEDGE

Provide an additional cushion surface with this wedge that rests on the seat beside the armrest.



NOCTURNAL SLEEP PAD

Convert a Classic Recliner into a Sleeper with a flat, comfortable sleeping surface that's easy to install, clean and store.



SLEEP GUARDS

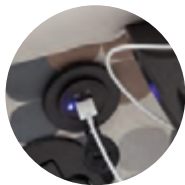
Removable sleep rails provide security for overnight treatments.

For Classic recliners with fixed arms.



FOOT REST EXTENDER

Comfortable support for taller patients' feet when in full recline position.



USB CHARGING PORT

USB charging port built into the recliner. Conveniently located within patients' reach.



TABLET HOLDER

Fully articulating for a full range of movement, designed to support lightweight electronics. Tablet not included.



TV/MONITOR MOUNT

Universal VESA mount that hides cords from the monitor. Articulating arm is adjustable allowing for a full range of movement. TV/monitor not included.



PERSONAL ITEMS BAG & HOOK

Store multiple personal items in one convenient bag or on a stainless steel hook. The hook can also be used with a Foley Bag.

PROTECTION



ARM CAPS

Black:
Only available for the Alō, Ascent, or Ascent II.

Wood:
Only available for the 526 Sleeper.



PUSH HANDLE COVER

Cushioned comfort that covers and protects the push handle and wall surfaces.



PAPER ROLL DISPENSER

A color-coordinated vinyl strap secures the paper roll dispenser to the rear push handle of the chair.



ARM COVERS

Easy-to-clean covers that minimize wear and tear on recliner arms.



HEAD FLAP

A double-sided head flap that protects the seat back to extend the life of the recliner. Logo embossing option available.

Not all options and accessories are compatible for use with all recliner models. Some items listed on this sheet can be added to existing recliners; additional parts may need to be purchased. For a full list of all accessories, visit the Champion website.

championchair.com/chair-accessories

TABLES & TRAYS



CUPHOLDER

Cupholder must be ordered with the table.

For the standard or black fold-away tables.



BLACK FOLD-AWAY TABLE

Sleek design without a lipped edge.

Only available on the Alō recliner line.



STANDARD FOLD-AWAY TABLE

Easily accessible by patients and caregivers. Available on one or both sides.



PIVOT TABLE

Pivots 360° to not impede patient entry or exit into chair.

Only available on the Alō recliner line.



OVER-THE-LAP TRAY

Slightly curved design with a cupholder included.

Use with Ascent models.

PROVIDER CONVENIENCE



TRANSMISSION BARRIER

Provides an additional layer of protection for patients and staff.

For the following recliners: the Classic, Ascent, Ascent II, or Alō.



BACK STEERING CASTERS

Maneuvering chairs down long hallways is far easier with back steering casters. Only available for the 5" thermoplastic caster.



CENTRAL-LOCKING CASTER SYSTEM

A quick and efficient way to lock all casters.

Available on the 85 Series, 86 Series, Alō, Ascent, and Ascent II recliners.



PUSH HANDLE

For easier patient transport.



BREAKAWAY ARMS

For easier transfer of patients to and from a wheelchair or bed. Also gives caregivers better access during treatment.



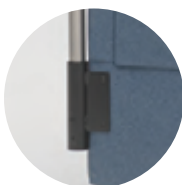
FOOT TRAY

Quickly release a hidden foot rest to increase comfort for your shorter patients and to provide safety during patient transport.



IV ROLLING BASE

IV poles lock securely into this five-caster base.



IV POLE BRACKET

Attach the IV pole to the recliner for space saving and ease of transport.



OXYGEN TANK HOLDER

Mounts to any chair and holds oxygen tanks or O₂ concentrators.



IV POLES (2 HOOK & 4 HOOK)

Extendable IV poles are easily mounted to the recliner, or simple to use in a rolling base.

accessories

Stretcher Chairs

Tablet and TV mounts that provide entertainment. IV and oxygen tank mounts that add functionality. Sleep guards for nocturnal therapies. Our extensive line of options and accessories lets you redefine both patient and practitioner experience and comfort.

PATIENT COMFORT



Clip-On Head Pillow

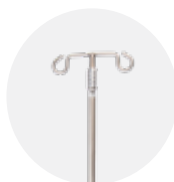
Memory foam head pillow that clips to the headrest; height adjustable.



1" Head Pillow

Patient pillow with heavy-duty Velcro, which mounts to any articulating headpiece.

IV & TANK HOLDERS



Telescoping IV Rod

Presents with multiple versions: Standard, Extended Height Version (extends from 28" to 62" in height), and Stationary.



Oxygen Tank Holder

Oxygen tank holders are designed to accommodate both 'D' and 'E' size cylinders.

PROTECTION



Upper Rail Pad Set

Offers added patient protection. Set includes Velcro fasteners that fasten around the rails.



Side Rail Pad Set

Offers added patient protection. Set includes Velcro fasteners that fasten around the rails.



Side Guards

Sturdy poly-carbonate side guards that are 8" high x 12" long and can be easily mounted to surgical rails.



Upper Side Rails

Add-on upper side rails hook onto the surgical rails mounted to the sides of the backrest section.



Head Extension with Push Bar

Removable head extension to create a wider surface around patient's head when utilizing an articulating head piece.



Head Extension for TMM5

Removable head extension to create a wider surface around patient's head when utilizing an articulating head piece.



Torso Belt (Multiple Sizes)

Provides additional support at the waist. Available in three variations: Regular, Wide, and Extra-Wide.



Lap Belt

2" lap belt with seat buckle and metal clasps.



Head Belt

1" nylon safety strap designed to keep the patient's head in place during diagnostic procedures.



Back Extension

Back extension, which allows the chair to also be utilized for safe patient transport.

Not all options and accessories are compatible for use with all recliner models. Some items listed on this sheet can be added to existing recliners; additional parts may need to be purchased. For a full list of all accessories, visit the Champion website.

championchair.com/chair-accessories

TABLES & TRAYS



Side Table with Cushion

Side table with removable cushion, which can be mounted on the right, left, or both sides.



Carter Hand Surgery Table

The table clips onto the surgical rail and is radiolucent and height adjustable.



Stainless Steel Utility Tray

Stainless steel tray with adjustable height and 360 degree rotation.



Folding Side Table

Easy-to-clean plastic folding table with two cup holders and a convenient pull-down button (can be mounted on the right, left, or both sides).

PROVIDER CONVENIENCE



Surgical Bar Extensions

For use with Hand Tables.



Clark Socket Set

Stainless steel sockets securely hold many accessories in place. Surgical Bars required.



X-Ray Cassette Holder

Durable, plastic-coated wire holder easily mounts to the back of a standard-width or wide-width chair.



Leg Positioning System

Leg positioning system, mounting clamps included.



Anterior Wrist Rest

A one-piece anterior wrist rest that mounts to any articulating headpiece on a TMM5.



Dual Anterior Wrist Rest

Height adjustable two-piece wrist rest that mounts to the articulating headpiece.



Dual Foot Pedal Control

Dual foot pedal control equipped with a VCU Control Box.



Air Delivery Drape Support

Clips onto a surgical rail.



Armboard - Seated Position

Mounts in any of the wells on the seat frame; can be rotated for desired positioning.



Charging Stand

Optional battery charging stand: Can easily follow stretcher-chair during transport so patient always has easy access to charger.

use instructions



1 LOCK CASTERS



2 EXTEND PULL-OUT STEP



3 ENTER AND SIT BACK



4 UPRIGHT POSITION



5 RELEASE HAND LEVER FOR "TV" POSITION. Foot rest will rise.



6 "TV" POSITION



7 PUSH BACK WITH HEAD AND SHOULDERS. To assist, grasp recliner arms and pull hips forward.



8 FULL RECLINE



9 SIT UP TO RETURN TO "TV" POSITION. To assist, grasp recliner arms and push hips back.



10 RETURN TO UPRIGHT POSITION. Foot rest will "click" when latched.



11 UPRIGHT POSITION FOR EXITING CHAIR



12 EXITING THE CHAIR

Exiting with Attendant Assistance



1 Locate and move hands and feet to safe location.



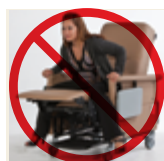
2 Move to the rear of the chair and use push handle to lift back to "TV" position.



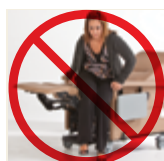
3 Move to front of the chair and push the foot rest closed.



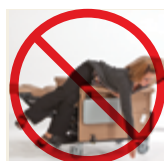
4 Allow exit once foot rest is latched.



NEVER exit without closing foot rest.



NEVER exit while reclined or if foot rest is extended.



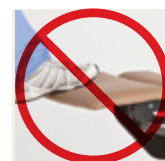
NEVER exit from the side of the chair.



NEVER put your hands into the mechanism area.



NEVER put your hands into the mechanism area.



NEVER force the foot rest closed.

setting the Trendelenburg feature

The Trendelenburg function should be operated by the caregiver. Your chair must be purchased with the Trendelenburg option when it was ordered. If your chair has this option, follow these directions for operation.

1

Adjust to Full Recline Position

Before operating the Trendelenburg function, you must move the chair to the fullrecline position. Pull the side lever to release the foot rest. Then push the chair backrest as far as it will go into the fullrecline position.



RELEASE FOOT REST
WITH SIDE LEVER



TV POSITION



FULL RECLINE POSITION

2

Place the Recliner in the Trendelenburg Position

Locate the Trendelenburg lever on the chair back (shown to the right). Pull the lever all the way up and hold as you push the backrest down as far as it will go to the Trendelenburg position (shown to the right bottom). You may stop at any position going downward by releasing the lever.

Please note: The caregiver is shown at the back of the chair in these instructions for clarity. You may also perform this function from the side of the chair.



LOCATE BACK LEVER



RAISE AND HOLD LEVER



PUSH RECLINER BACK DOWN

3

Return to the Upright Position

To return the chair to upright position, locate the Trendelenburg lever on the chair back. Pull the lever all the way up and hold as you lift the backrest and return it to the fully-upright/TV position (shown at bottom right). It is recommended that this step be done from the back of the chair.



LOCATE BACK LEVER



RAISE AND HOLD LEVER



LIFT RECLINER BACK UP

4

Raise to Full Upright Position

Once the backrest is returned to the fully-upright/TV position, push the foot rest down until you hear it click and lock in place. To avoid damage to the mechanism, the foot rest should never be pushed down until the backrest is returned to the fullyupright/ TV position.



RAISE BACK OF RECLINER



PRESS FOOT REST DOWN



FINAL UPRIGHT POSITION

fabrics

Champion Collection



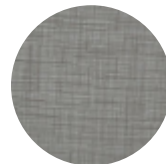
**SL30
RAIN**



**SL27
DUNE**



**SL26
OCEAN**



**SL21
WATERFALL**



**C0662
SAND DOLLAR**



**C0460
LUCID**



**C0383
BALLAD**



**MOC49
DOLPHIN**



**MOC27
STONE**

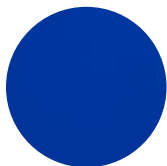


**MOC16
PEARL**

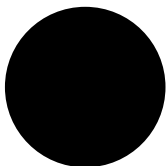
**All of the above fabrics are standard for Alō Treatment and Alō Recovery.*

**For Ascent, Augustine, Verō, Inverness: Rain, Dune, Ocean, and Waterfall fabrics are an upgrade; all other fabrics above are standard on these models.*

TransMotion Collection



BLUE FUSION



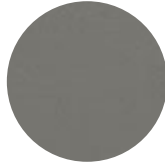
BLACK FUSION

**Standard fabric for all TransMotion TMM 3,4, & 5 models.*

Winco Collection



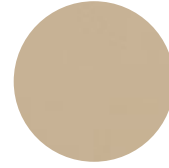
**FS26
HARBOR BLUE***



**FS22
PEBBLE GREY***



**FS17
NAVY BLUE***



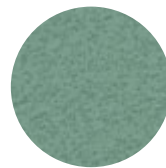
**FS12
ALMOND***



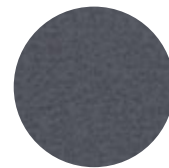
**T56
GRAY**



**T45
COLONIAL BLUE**



**T26
ICED MINT**



**T21
BONNIE BLUE**



**T09
NATURAL**



**T96
BUCKSUEDE**



**19
LARK****

**For The Classic, The Legacy Series (The Care Cliner & Drop Arm Care Cliner), and Clinical Essentials: Harbor Blue, Pebble Grey, Navy Blue, and Almond are an upgrade; all other fabrics above are standard on these models.*

***Lark 19 is the primary color for the Harmony.*

Privacy Screens



WHITE



LIGHT BLUE

**Additional custom colors available for privacy screens.*

How Champion Recliner Solutions Serve Environments Across the Healthcare Industry

At Champion, we're committed to providing premium medical seating ready to elevate patient comfort and provider ease of use across every aspect of a healthcare setting. Use this graphic to get an idea of how our solutions benefit differing types of care.



Outpatient

The Classic recliner/transporter is our tried-and-true workhorse for outpatient settings, featuring:

- A solid steel frame
- Standard swing-away arms
- Easy cleaning for infection prevention and control
- Efficient maintenance and patient transfers
- Durable, thermoplastic casters
- Push handle for patient transport

Oncology & Infusion

The Alō recliner is our premium choice for treatment seating in oncology and infusion, offering a range of aesthetic choices combined with leading features like:

- Swing-away arms
- Trendelenburg for critical moments
- Heat/massage options for comfort
- Wide arm surface for setting IVs
- "Infinite recline" for maximum comfort
- Wall-hugger mechanism
- Removable seat and soft, medical-grade vinyl
- Easy cleanability and access
- Comfort padding and extra cushioning

Nuclear

The Ascent powered recliner provides clinical functionality with empowering patient comfort, featuring:

- Open design to drape the chair
- Powered recline for easy positioning
- Hand-held remote control to help reduce exposure
- Wall-hugger mechanism
- Increased padding for added softness and comfort
- Durable engineering with an upscale look
- Swing-away arms
- Retractable foot tray and fold-away side table





ICU

The Ascent recliner is ready to serve ICU applications, offering the durability of our classic recliner with clean aesthetics and featuring:

- Extra cushioning
- “Infinite recline”
- Wall-hugger mechanism
- Swing-away arms for lateral patient transfer
- Removable seat
- Easy patient transport
- IV pole/bracket and TV mount options

Labor & Delivery

The Augustine recliner is the premium choice for comfort in labor and delivery scenarios, featuring:

- Powered recline for patient empowerment
- Custom aesthetic selections to create a “home-like” environment
- Heat/massage options
- USB port availability
- Fold-away table options
- “Infinite recline” positions for maximum comfort
- Comfort cushions

Patient Rooms

The Verō recliner is our premium choice for seating in patient rooms, offering a range of aesthetic choices combined with leading features like:

- Lower seat height
- Swing-away arms
- Heat/massage options for comfort
- “Infinite recline” for maximum comfort
- Wall-hugger mechanism
- Removable seat and soft, medical-grade vinyl
- Easy cleanability and access
- Comfort padding and extra cushioning

Dialysis

The Inverness is our most popular and preferred chair for dialysis care, carrying weight up to 300 lb.. with an available bariatric version supporting up to 500 lb.:

- Extra cushioning
- Soft, medical-grade vinyl
- Wall-hugger mechanism
- Swing-away arms
- Removable seat
- Easy patient transport
- Heat/massage options
- Fold-away table options

Emergency Department

The unique, fully powered **TMM** all-in-one stretcher chair is ready to respond to any need, featuring:

- Fully powered, independent articulation
- Lower seat height
- Moveable arms
- Vertical height adjustment
- Hand-held remote control
- Emergency Trendelenburg positioning
- Central-locking casters
- Battery backup

How TransMotion Solutions Fit Your Facility

TransMotion stretcher chairs streamline surgical and procedural cycles by allowing patients to go from admission to procedure, to discharge on a single surface. Surgeons, nurses, and patients all benefit when a TMM stretcher chair is used.



ENT

The **TMM5 PLUS** is the perfect solution for ENT procedures due to features such as:

- Dual Articulating Headrest for positioning flexibility.
- Triple Column Base (T): 24" – 40" seat height for easy patient ingress and egress.
- Pendant Controlled Patient Positioning.
- 500 lb. weight capacity.

Ophthalmology

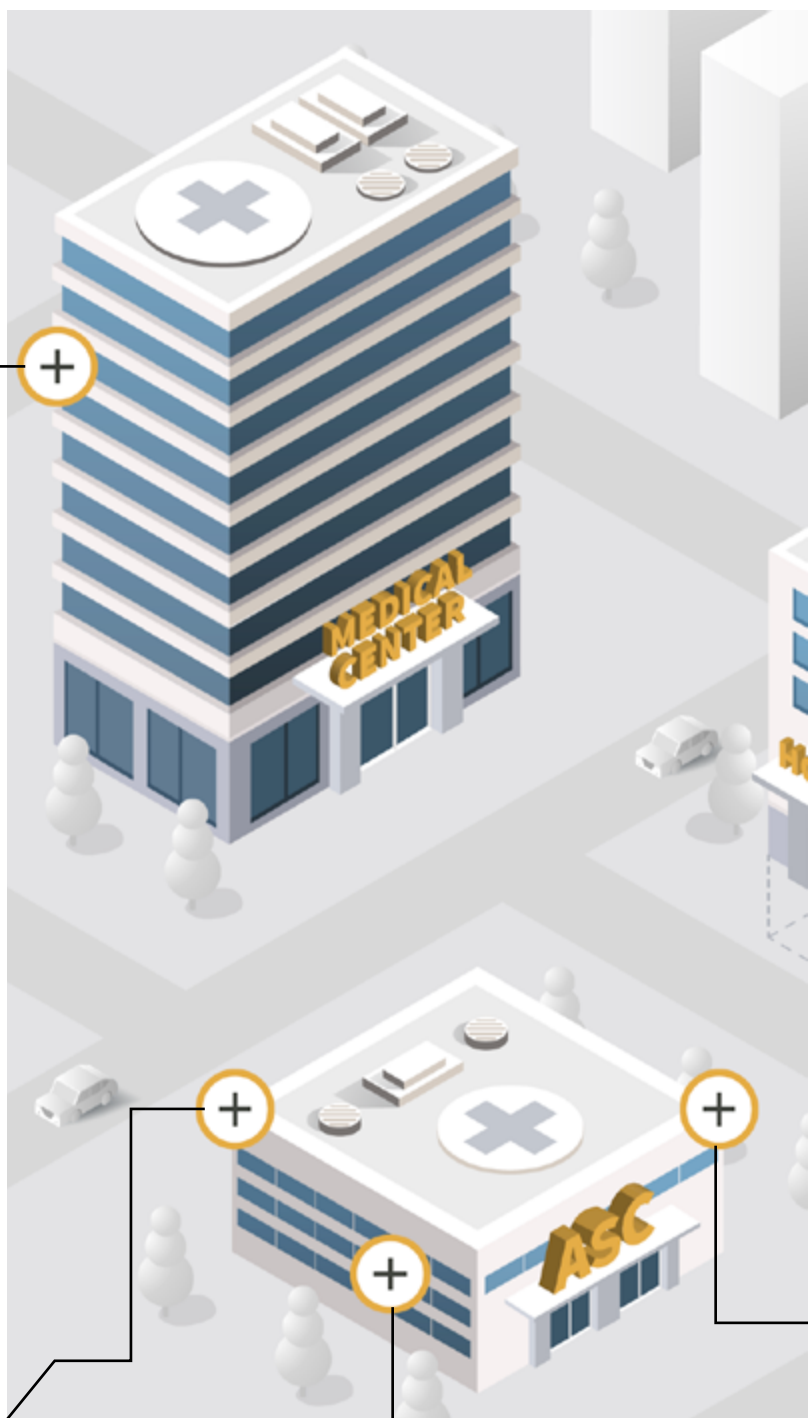
The **TMM5 PLUS** is designed to streamline and advance the ophthalmic patient treatment process.

- Dual Articulating Headrest for more precise positioning.
- Surgical Support Leg provides rigidity and stability to the back section.
- Triple Column Base (T): 23" – 39" seat height provides a more ergonomic height.
- Seat Tilt (X) for Trendelenburg positioning.
- Pendant Controlled Patient Positioning for easy adjustment from the seated position to a prone position.
- Optional Anterior Wrist Rest mounts to the headpiece and is height adjustable for extra support.

Plastic Surgery

The **TMM5 PLUS** is a solid choice for a wide array of plastic, cosmetic, and aesthetic surgery.

- Dual Articulating Headrest is excellent for facial procedures, providing better surgeon access to the temporal area.
- Seat Tilt (X) reclines the patient back to create the desired positioning for abdominoplasty.
- Pendant Controlled Patient Positioning.
- Triple Column Base (T) for safer patient egress and a more ergonomic height for surgeons.
- Multi-Layer Foam Cushions for exceptional patient comfort during recovery.





Patient Handling

The **TMM4 PLUS** offers an effective solution for minimizing the risk of potential staff injuries and patient falls.

- Powered Pendant Control allows patients to progress from admission to procedure to discharge on the same platform.
- Wide Seat (W): A 28" seat width supplies extra comfort for larger patients.
- Triple Column Base (T) allows for safer patient egress and provides staff with the ability to interact with patients at the level most comfortable for them.
- Full Radiolucent Back: Perform X-ray, fluoroscopic, C-arm, and other diagnostic imaging procedures without the need to transfer your patient.
- Accessories include: IV Poles, Oxygen Tank Holders, Folding Side Tables, and Head Pillows are among the most popular for VA environments.

PACU

The **TMM4 PLUS** can be configured with a variety of options that are excellent solutions for the Post-Anesthesia Care Unit.

- 90° Rotating Seat: Allows the patient to stay seated for both lateral and anterior posterior imaging.
- Full Radiolucent Back Section (13" x 26"): Allows in-chair use with X-ray, fluoroscopic, C-arm, and other diagnostic imaging procedures.
- Powered Pendant Positioning: Adjust back, leg, and height of chair at the push of a button.
- Optional Removable Back Extension: Often added to allow for safer patient transport.
- Optional Short Wheelbase (S): Recommended for facilities with R/F towers with steel plates on the floor.

Radiology / Fluoroscopy

The **TMM3** is designed specifically to help improve the productivity of the Fluoroscopy Suite.

- 90° Rotating Seat: Allows the patient to stay seated for both lateral and anterior posterior imaging.
- Full Radiolucent Back Section (13" x 26"): Allows in-chair use with X-ray, fluoroscopic, C-arm, and other diagnostic imaging procedures.
- Powered Pendant Positioning: Adjust back, leg, and height of chair at the push of a button.
- Optional Removable Back Extension: Often added to allow for safer patient transport.
- Optional Short Wheelbase (S): Recommended for facilities with R/F towers with steel plates on the floor.

Outpatient Surgery / ASC

The **TMM4 PLUS** easy converts from chair to stretcher at the push of a button, it is effortless to maneuver, and takes up less space than a traditional stretcher.

- Seat Tilt (X) provides quick access to Trendelenburg positioning.
- Wide Seat (W) allows patients to easily turn onto their sides.
- Triple Column Base (T) allows for safer patient egress and provides a more ergonomic height for surgeons and other staff.
- Full Radiolucent Back for X-ray, fluoroscopic, C-arm, and other diagnostic imaging procedures without the need to transfer a patient.
- Optional IV Pole and/or Oxygen Tank Holder: A favorite add-on for outpatient surgical settings.
- Head Pillow Accessory: For extra patient comfort or to raise the patients head for easier surgeon access.

Emergency Department

The **TMM4 PLUS** easily converts from chair to stretcher at the push of a button, is effortless to maneuver, and takes up less room than a traditional stretcher.

- Seat Tilt (X) for easy access to Trendelenburg positioning when needed.
- Wide Seat (W) for enhanced comfort during extended periods.
- Integrated Scale (Q) allows staff to record patient weights (in-chair) up to 500 lb./227 kg.
- Radiolucent Backrest allows for x-ray and flourosopic procedures to be performed in-chair.
- Powered Positioning reduces the need for patient transfers thereby helping to reduce strain on healthcare workers.
- Dual Column Base for easy patient ingress and egress.



Information contained in this literature is based on the latest product data available at the time of printing. Photography, artwork, text and specifications are subject to change. Due to photographic and printing processes, product colors in this brochure are not necessarily accurate. Champion Manufacturing Inc. reserves the right to make changes to colors, materials, prices, standards, options, equipment and any specification at any time without notice or obligation. Contact Champion direct for additional information and the latest specifications.